

CATERPILLAR D6T LGP



VAN DER WOUDE

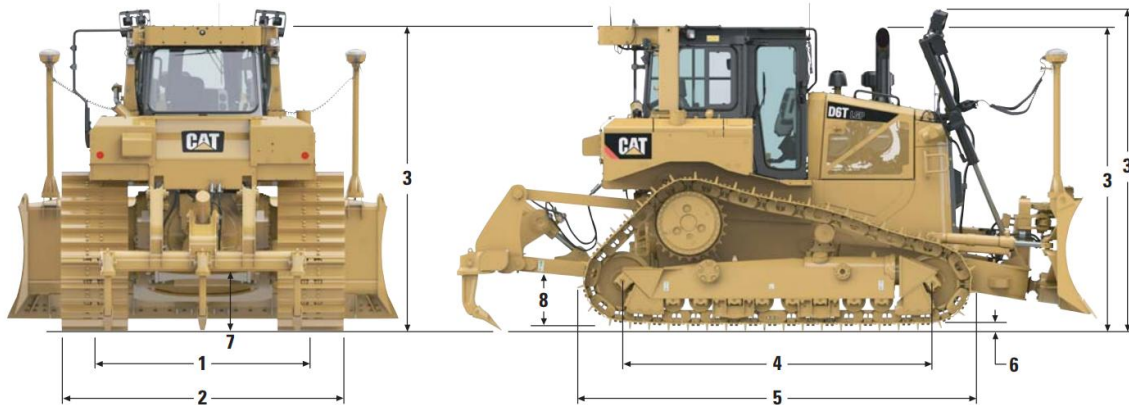
De Wieken 22
8801RA Franeker

☎ +31 (0)518 402 076
✉ info@woudegroep.nl
🌐 www.woudegroep.nl

CATERPILLAR D6T LGP

Technische gegevens:

Motor vermogen:	154 kW / 207PK
Gewicht:	23 T
GPS systeem:	Trimble



	LGP	
1 Track gauge	2286 mm	7 ft 6 in
2 Width of tractor over trunnions	3480 mm	11 ft 5 in
Width of tractor without trunnions (standard track)	3201 mm	10 ft 6 in
3 Machine height** from tip of grouser:		
ROPS	3235 mm	10 ft 7 in
Premium Light Package	3097 mm	11 ft 1 in
Height to top of Sweeps (not shown)	3249 mm	10 ft 8 in
4 Length of track on ground	3270 mm	10 ft 9 in
5 Length of basic tractor	4546 mm	14 ft 11 in
With following attachments add:		
Drawbar	229 mm	9 in
Ripper Multi-shank (tip at ground line)	1259 mm	4 ft 2 in
Winch	435 mm	17 in
S Blade	947 mm	3 ft 1 in
SU Blade	—	—
A Blade	1305 mm	4 ft 4 in
A Blade angled approximately 25° for transport	989 mm	38.9 in
6 Height of grouser	65 mm	2.6 in
7 Ground clearance	406 mm	16 in
Oscillation at front idler	163 mm	6.4 in
Track pitch	203 mm	8 in
Number of shoes per side	45	
Track rollers/carrier rollers per side	8/1	
Standard shoe width (moderate service)	915 mm	36 in
Ground contact area (standard track)*	6.53 m ²	10,122 in ²
Ground pressure*	34.4 kPa	4.99 psi
8 Drawbar height	626 mm	25 in
From ground face of shoe	561 mm	22 in

